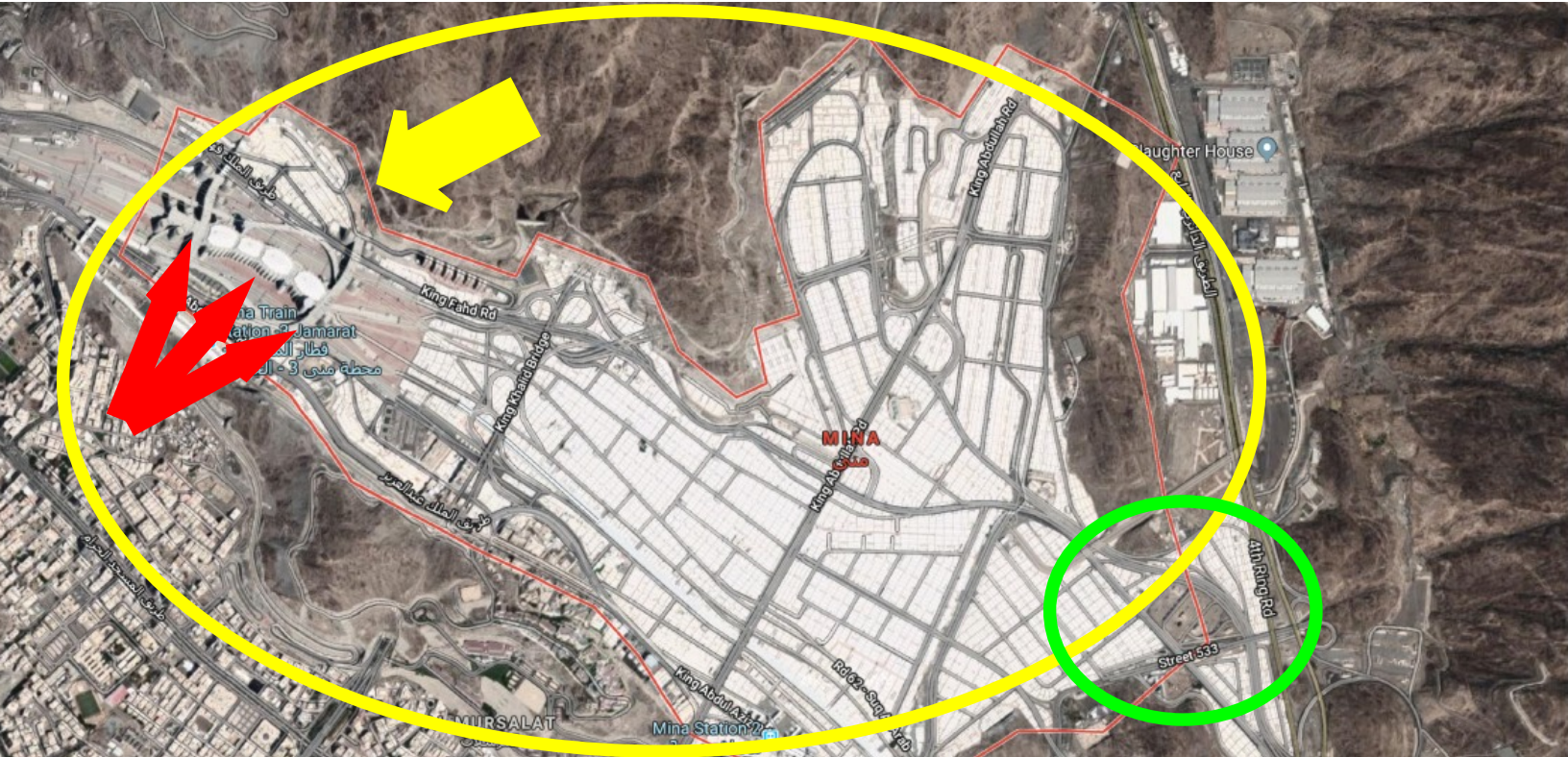


## Location in Mina and Arafat

Private upgraded ( Momayaz ) Tents close to Jamarat in Mina and upgraded tents in Arafat with Full Board Meals.



**The yellow circle shows the whole Mina where almost three millions will be there.**

Our VIP camp is the almost the first one, once you enter Mina from King Fahd tunnel. In our roads we can use our private buses /Train while in north American tents you have to take any of the governmental buses which circles in afenced ring roads .The location of VIP tents pointed with the red arrow, Jamarat three of them pointed with the blue 3 arrows

**The green circle is where the North American tents are located.**